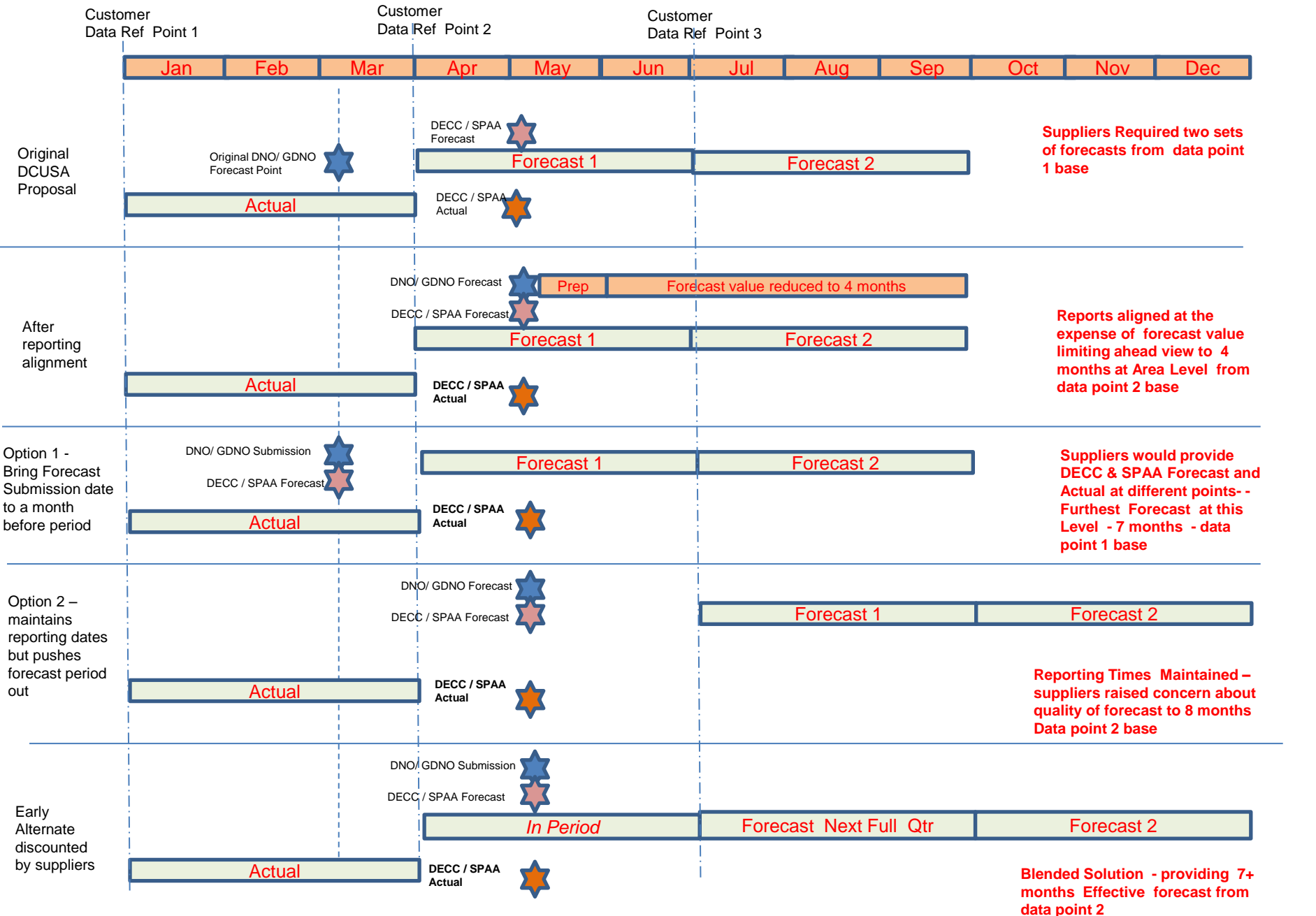


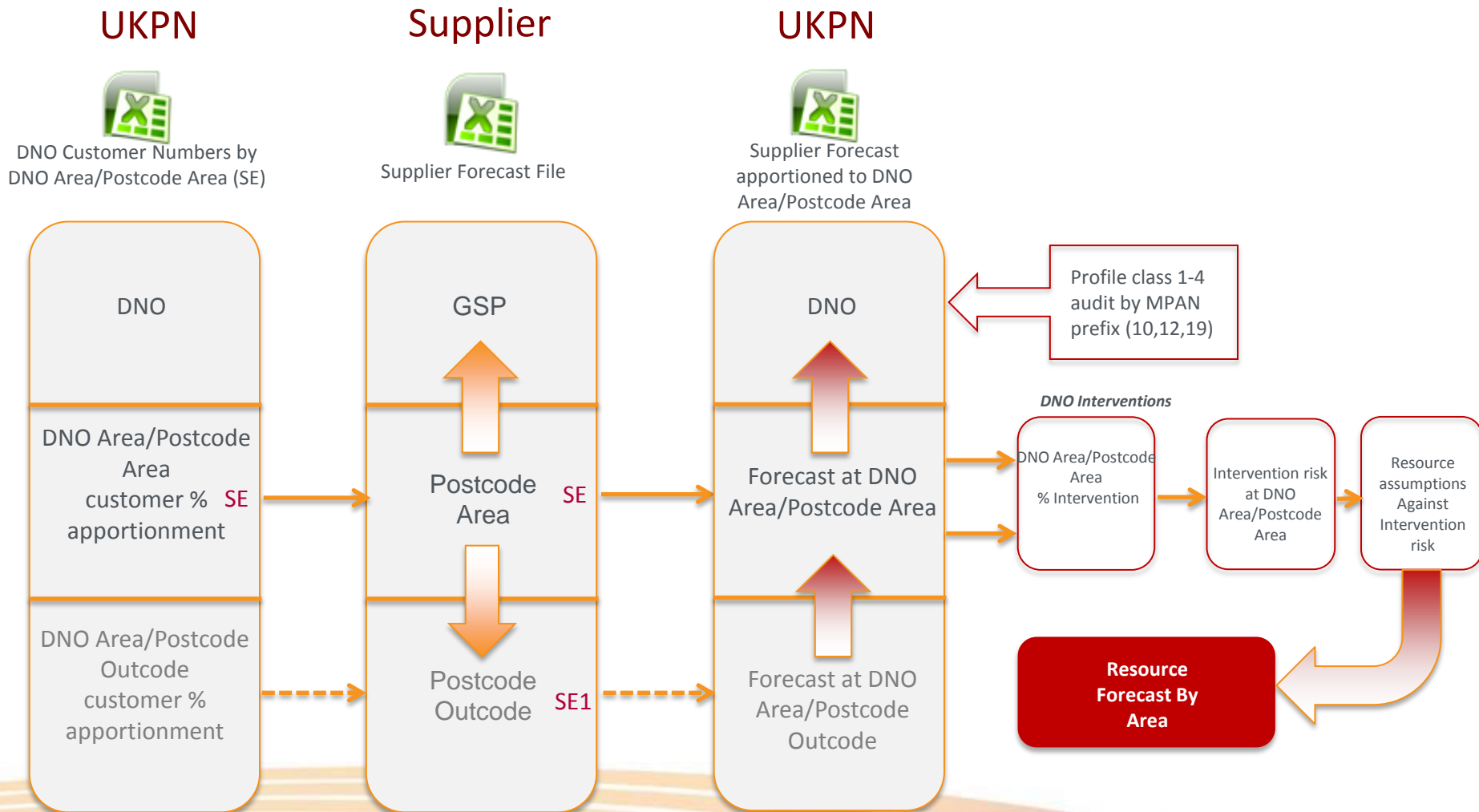


# ODG Feb 2016 Items for ISSG

Aggregated Supplier Forecasting – to Post Code Out Code – for Local Area Forecast Development



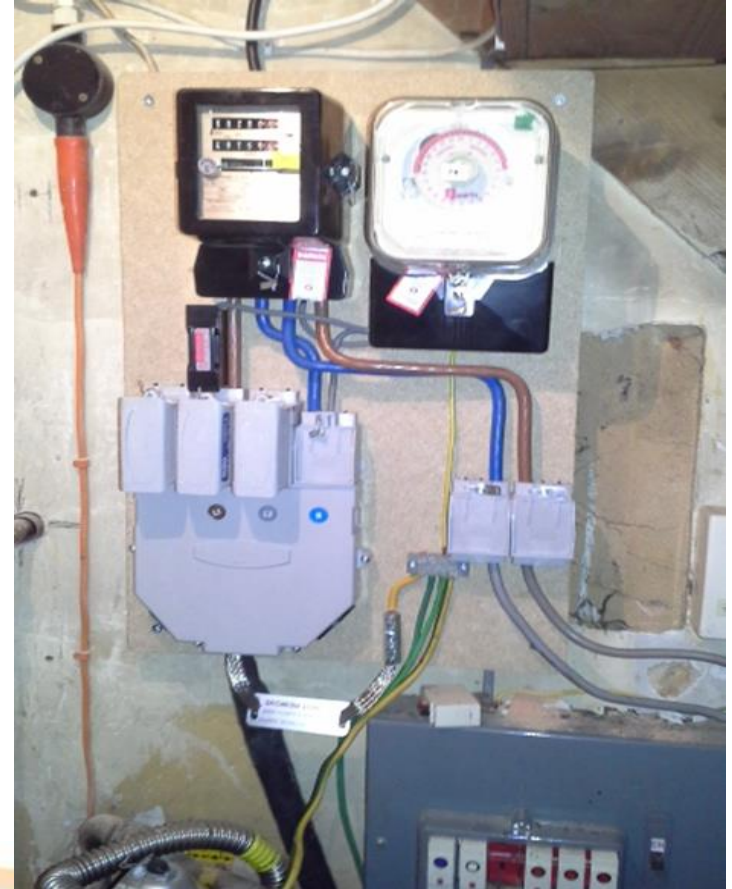
# UKPN Smart Metering Resource Forecast Reporting Approach



# Review of Mops staying on site and 3 hr Cat A emergency attendance

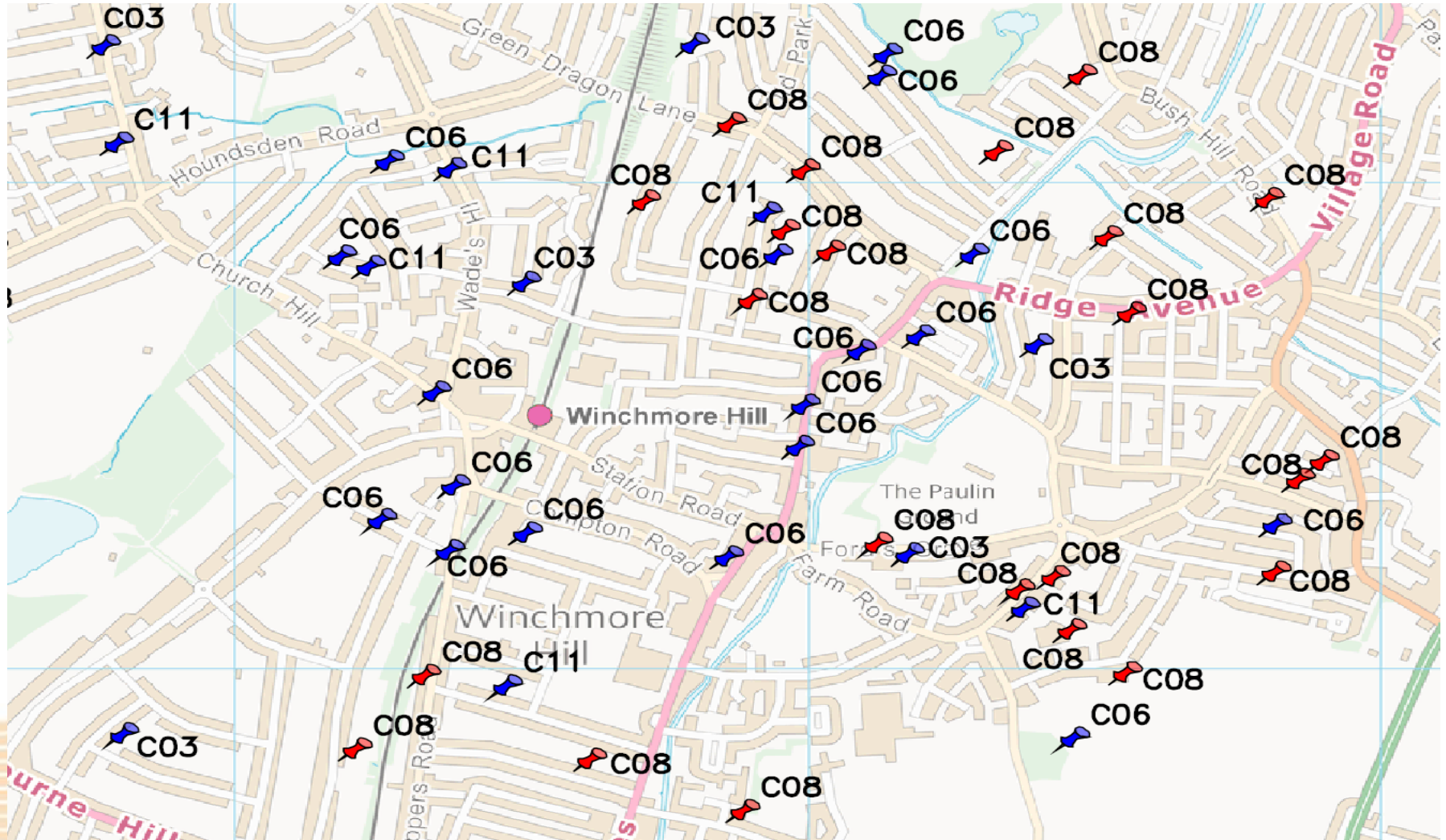
	Description	MOCOPA Requirement	Emergency SLA	
A01	Cutout Currently Operating Hot ( signs of overheating )	Stay Remove Load	Yes	7%
A02	Service Cable Currently Operating Hot	Stay Remove Load	Yes	<1%
A03	Defective / weakened fuse carrier contacts	Leave Isolated	Yes	3%
A04	Physical damage to cutout / service cable requiring immediate action	Stay or Shroud	Yes	15%
A05	Visual Indication of burning / Smoke / Smell of smoke	Stay	Yes	2%
A06	Audible sounds of arcing	Stay	Yes	< 1%
A07	Exposed live conductors ( live or neutral )	Risk Assess / Shroud	No	46%
A08	Broken fuse carrier - access to live components	Risk Assess / Shroud / Make safe	No	11%
A10	DB earthing Issues which present an immediate risk to customer	Make Safe	No	1%
A12	Damaged Asbestos components in DB equipment	Make Safe	No	<1%
A14	Polarity identified as incorrect at DB cutout	Stay and Isolate	Yes	<1%
A15	Immediate risk to customer due to current service position	Remain or Make Safe	Yes	2%
A17	Live DB metal encased equipment	Remain or Make Safe	Yes	New

# Meter Board Changes





# Pre-emptive Re-classification of Cat C's



# Q4 Interventions Summary

Reporting DNO Reporting Period		UKPN				DNO Interventions Summary							Erroneous Reporting	
		Oct-2015 to Dec-2015												
DNO	D150 Meter Activity	'Smart' related D150 Meter Activity	% Smart	D0135 Intervention Requests	%D135 of D150 Meter Activity	Category A Volume	%Cat A of D150	Category B Volume	%Cat B of D150	Category C Volume	%Cat C of D150	Cat C Ratio to Cat B	Reported as Cat A where found to be Cat B or Cat C	Reported as Cat B where found to be Cat A or Cat C
EPN	59,900	33,922	56.6%	3,465	5.8%	2,251	3.8%	1,092	1.8%	122	0.2%	11.2%	128	1
LPN	32,136	16,921	52.7%	1,395	4.3%	773	2.4%	562	1.7%	60	0.2%	10.7%	40	0
SPN	39,673	21,589	54.4%	1,026	2.6%	519	1.3%	486	1.2%	21	0.1%	4.3%	64	1
	131,709	72,432	55.0%	5,886	4.5%	3,543	3717.4%	2,140	6154.6%	203	0.2%	9.5%	232	2
						Supplier Interventions Summary							Erroneous Reporting	
Supplier Group	Meter Activity	'Smart' related D150 Meter Activity	% Smart	D0135 Intervention Requests	%D135 of D150 Meter Activity	Category A Volume	%Cat A of D150	Category B Volume	%Cat B of D150	Category C Volume	%Cat C of D150	Cat C Ratio to Cat B	Reported as Cat A where found to be Cat B or Cat C	Reported as Cat B where found to be Cat A or Cat C
DNO C	43,727	31,843	72.8%	3009	6.9%	2,331	5.3%	604	1.4%	74	0.2%	12.3%	157	1
	19,776	7,243	36.6%	710	3.6%	345	1.7%	351	1.8%	14	0.1%	4.0%	28	1
	23,985	11,078	46.2%	836	3.5%	283	1.2%	514	2.1%	39	0.2%	7.6%	16	0
	5,900	2,596	44.0%	278	4.7%	119	2.0%	148	2.5%	11	0.2%	7.4%	3	0
	2,552	175	6.9%	50	2.0%	21	0.8%	26	1.0%	3	0.1%	11.5%	1	0
	16,631	4,577	27.5%	412	2.5%	175	1.1%	200	1.2%	37	0.2%	18.5%	8	0
Others	19,138	14,920	78.0%	592	3.1%	269	1.4%	297	1.6%	26	0.1%	8.8%	19	0
	131,709	72,432	55.0%	5,887	4.5%	3,543	2.7%	2,140	6154.6%	204	0.2%	9.5%	232	2